



Myth vs. Fact

The Truth About Flex-Based, Personalized Learning and Non-Classroom Based Public Charter Schools

Myth: All non-classroom based public charter schools provide online education only.

Fact: According to a report from the California Charter Schools Association (CCSA), only 9% of the total 310 non-classroom based public charter schools (NCBs) in California provide online education only. Many NCBs provide Flex-Based, Personalized Learning in which students receive a tailored blend of both synchronous and asynchronous learning through in-person instruction at resource centers and school campuses, distance learning, independent study, home study, community-based learning, internships, and CTE pathways.

Myth: Non-classroom based public charter schools do not operate facilities for in-person learning.

Fact: Most Flex-Based, Personalized Learning public charter schools operate resource centers and school campuses where they provide traditional classes; science, computer, and math labs; special education services; English language development programs; CTE programs, testing and assessment programs; tutoring; counseling services; resource libraries, and more.

Myth: Non-classroom based public charter schools are cheaper to run and need less money than traditional schools.

Fact: All costs for facilities, maintenance, transportation, technology, and instructional materials must come out of NCB charter schools' operating budget as they are not subsidized by any of California's facility subsidy programs. In addition, individualizing learning for each student is more costly than a one-size-fits-all model that uses the same textbook, pacing, environment, and education delivery for all students.

Myth: Charter schools attract the cream of the crop and only enroll wealthy and academic proficient students.

Fact: In full compliance with admissions law, APLUS+ Flex-Based, Personalized Learning public charter schools and other NCBs do not pick and choose which students to admit. They are tuition-free public schools that are open to all students in their service areas.

Myth: Students at Flex-Based, Personalized Learning public charter schools have lower academic performance than students at traditional schools.

Fact: Many Flex-Based Personalized Learning public charters that are part of the APLUS+ network of schools meet or exceed California Assessment of Student Performance and Progress (CAASPP) state standards. APLUS+ research has consistently shown that the longer students stay in a Personalized Learning environment the better their academic results.

APLUS+ member schools have been recognized as Distinguished Schools by the California Department of Education and by Stanford University's Center for Research on Education and the Educational Results Partnership in closing achievement gaps, particularly among higher-poverty and historically disadvantaged student populations.

Myth: Personalized Learning means students can choose content or activities that are not aligned with state standards.

Fact: Flex-Based, Personalized Learning public charter schools adhere to the same state standards as every other public school in California. The standards-aligned curriculum is assigned by each student's credentialed teacher and designed to meet or exceed common core state standards.

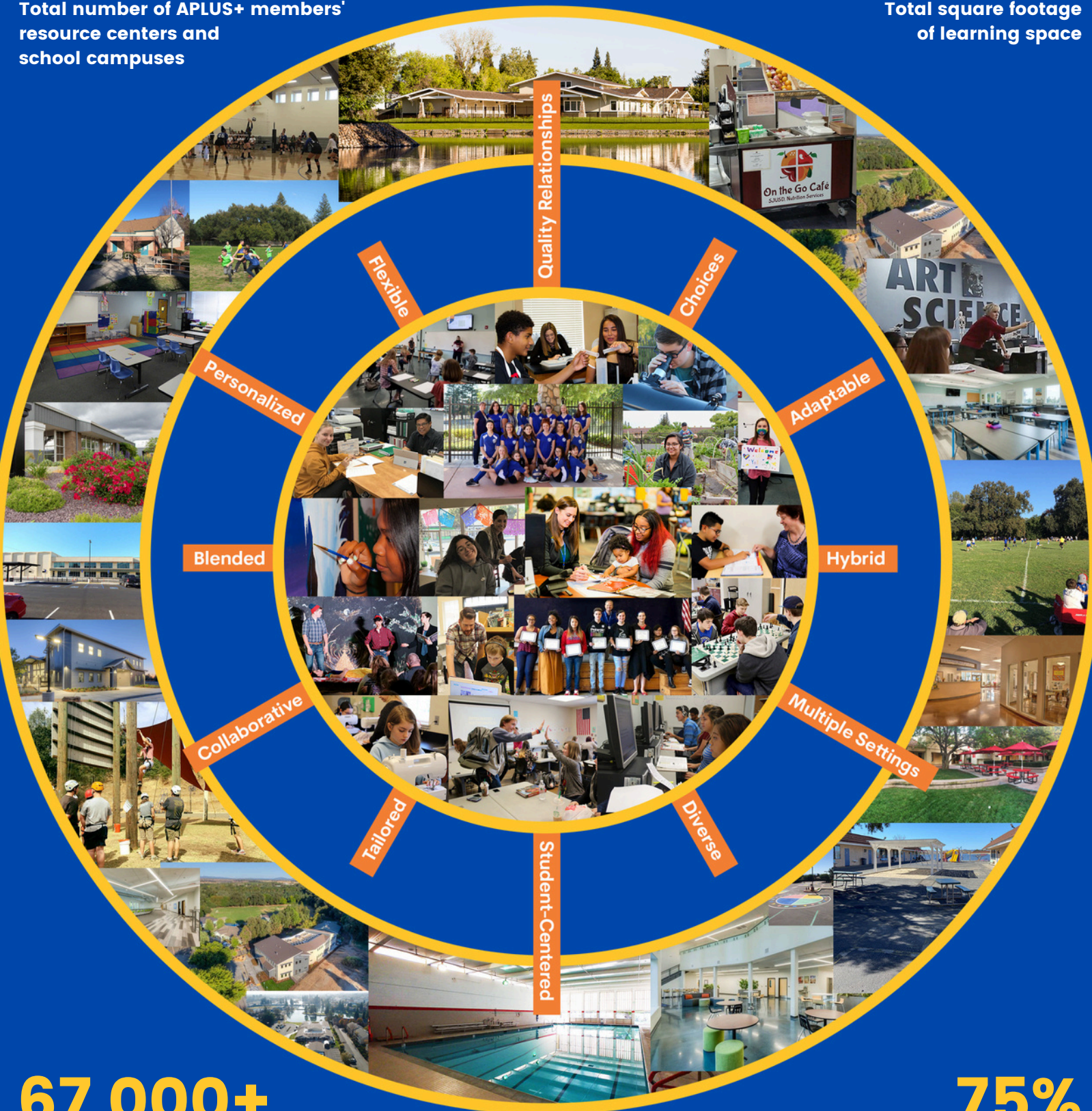
A SNAPSHOT OF APLUS+ MEMBER SCHOOL FACILITIES AND STUDENTS

190+

Total number of APLUS+ members' resource centers and school campuses

1.7+ million

Total square footage of learning space



67,000+

Total number of students accessing facilities for one or more learning activities

75%

Total percentage of students accessing APLUS+ member school facilities